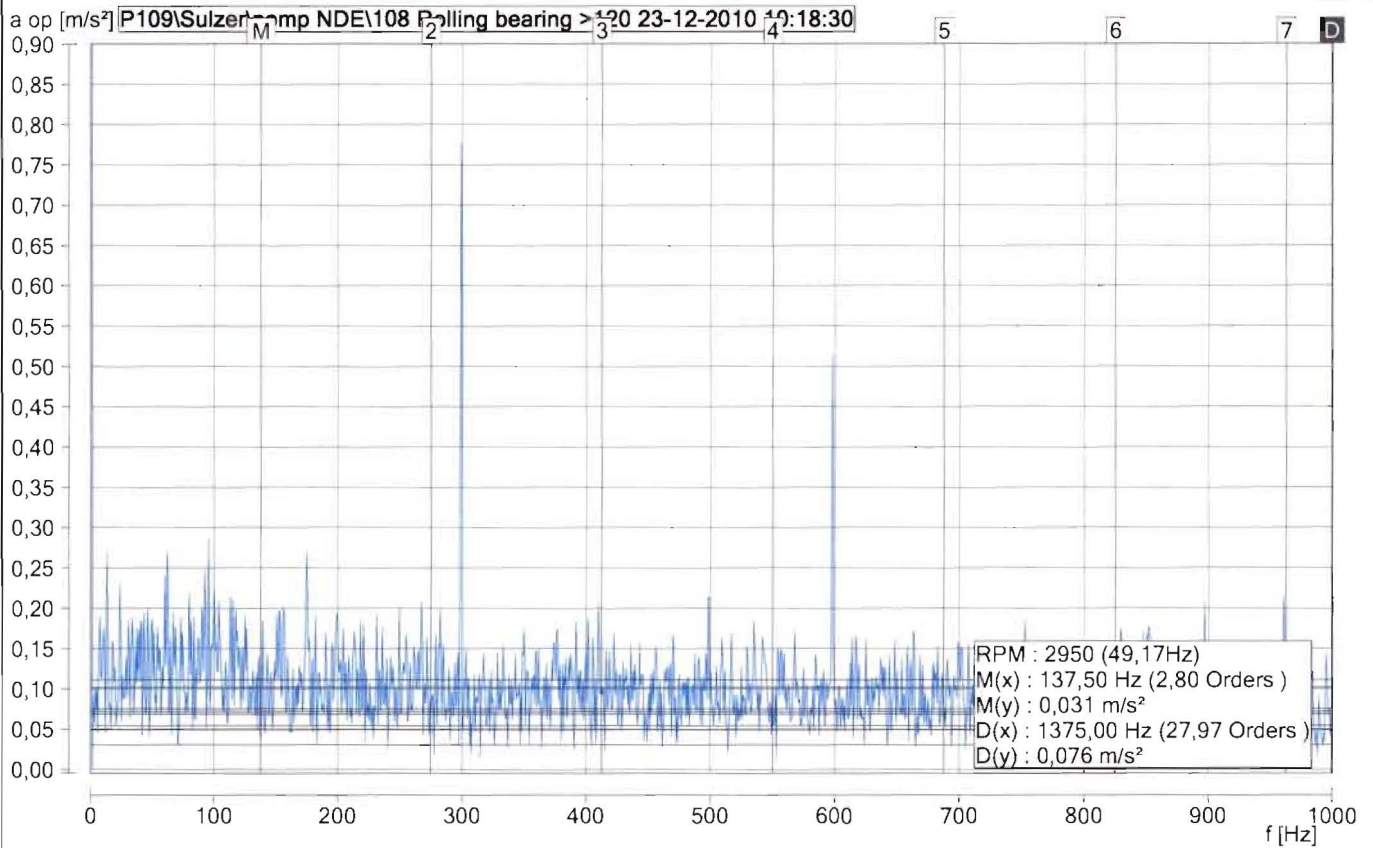


Datum en tijd: 23-12-2010 10:18:30

AFS\P109\Sulzer\pomp NDE\108 Rolling bearing >120



Hoofdcursor	X [Hz]	= 137,50
	Y [m/s ²]	= 0,031
Deltacursor	X [Hz]	= 1375,00
	Y [m/s ²]	= 0,076
RPM		= 2950
rms	Y [m/s ²]	= 2,08

Datum	Tijd	Event	Commentaar
29-6-2010	8:22:45	Meetresultaten gemist	Meting gemist.
29-6-2010	8:12:44	Meetresultaten gemist	Meting gemist.

kan.Nr.	A	
1	X [Hz]	Y [m/s ²]
2	0,00	15,201
3	298,75	0,778
4	598,13	0,514
5	95,63	0,287
6	175,00	0,270
7	13,13	0,270
8	61,88	0,269
9	92,50	0,247
10	60,00	0,239
	23,75	0,231